



# Quick Installation Guide

## Smart Home Data Server

Model: AirMemo N1

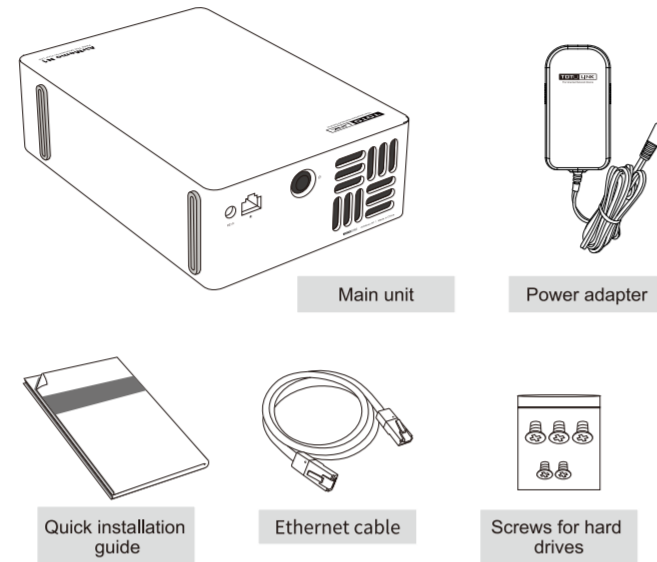
Copyrights © TOTOLINK. All rights reserved. Website: <http://www.totolink.net>  
Information in this document is subject to change without prior notice.

Manufacturer: ZIONCOM ELECTRONICS (SHENZHEN) LTD.  
Address: Room 702, Unit D, 4 Building Shenzhen Software Industry Base, Xuefu Road, Nanshan District, Shenzhen, Guangdong, China

## 1. Product Instruction

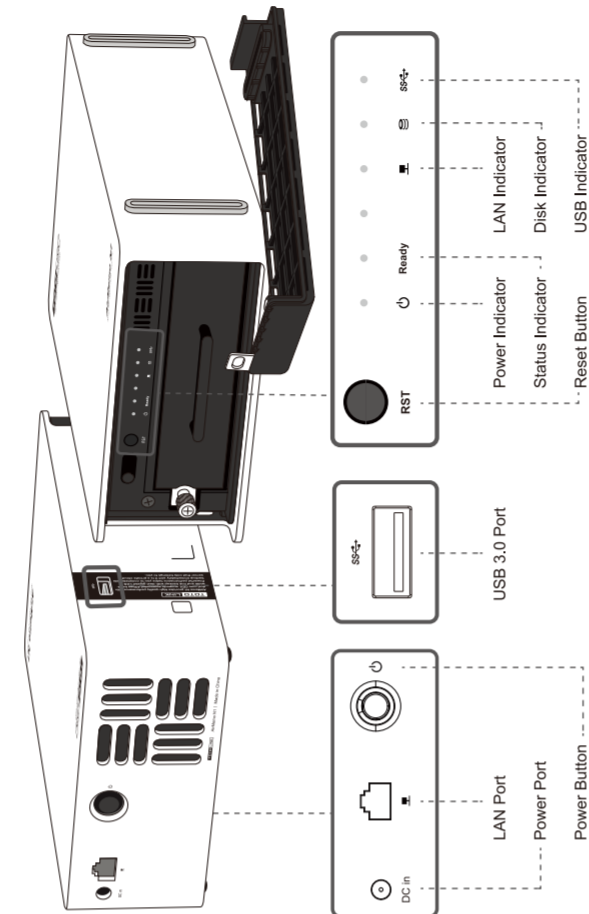
### (1) Package Contents

- 1 \*Main unit
- 1 \*Ethernet cable
- 1 \*Power adapter
- 1 \*Screws for hard drives
- 1 \*Quick installation guide



02

### (2) Overview



03

### LED indicator instruction

⏻	Static	Power on
	Off	Power off
Ready	Static	System normal
	Off	System error
📶	Flashing	Network connected
	Off	No network
📀	Static	Drive ready
	Off	No internal drive/Drive error
🔌	Static	External drive detected
	Off	External drive is not detected

### Interface and button instruction

Power port	Power supply
Hard drive port	Insert the hard drive, power the drive, read and write data
LAN port	Connect with router through RJ45 cable, provide network transmission
USB port	Connect to a mobile hard drive to import and export data via APP
Power button	Powering on/off the device
RST button	Press and hold the button for 5 seconds until all indicators flash to restore factory settings and the data in the hard disk will be retained.

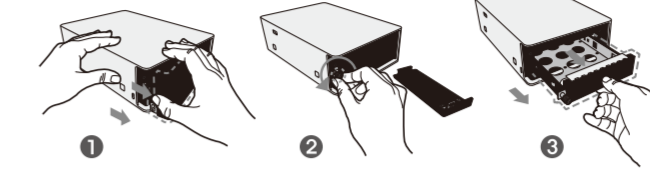
### Specifications

Product Name	Smart Home Data Server
Model	AirMemo N1
CPU	Marvell 88F6820 Dual-core1.6GHz
Memory	2Gbytes DDR3
Drive bay	One bay
Drive type	SATA 3.0, 2.5/3.5 inch disk
Drive capacity	1TB/2TB/3TB/4TB/6TB/8TB
USB port	USB3.0 *1
LAN port	10/100/1000Mbps LAN*1
Button	DCIN*1, SATA*1, Power*1, RST*1
LED	Power*1, Ready*1, LAN*1, HDD*1, USB3.0*1
Supported clients	Windows 7, 8, 10, 11, Android, iPhone
Power supply	DC 12V/3.5A
Dimension	140*205*61MM

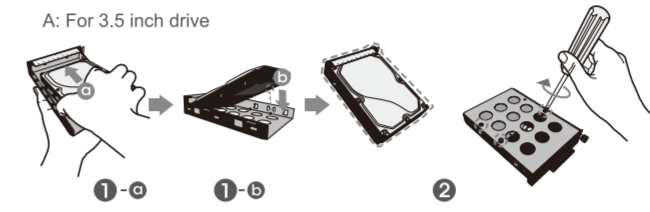
04

## 2. Install Drives

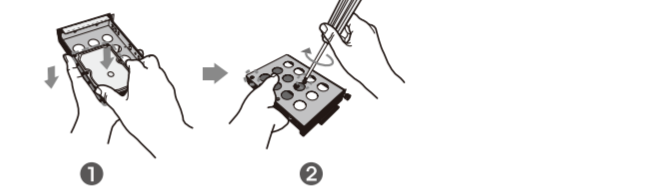
### (1) Take out hard drive tray



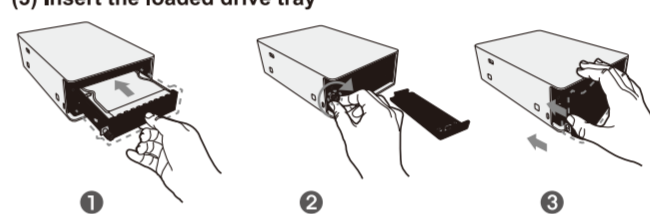
### (2) Assemble hard drive



### (3) Insert the loaded drive tray



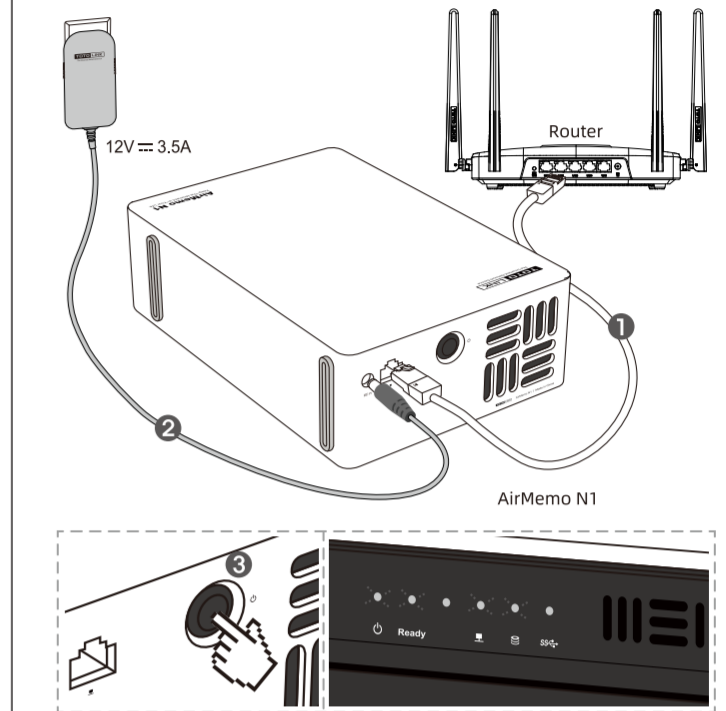
### (3) Insert the loaded drive tray



05

## 3. Device connect

- Use the LAN cable to connect the device to your router.
- Connect the power adapter to the power port of device and power outlet to provide power.
- Press the power button to turn on the device, make sure the blue LED indicator light on in front panel.



06

## 4. Client Download and Install

### Phone application

- Scan the QR code below or search "T-Home" in the mobile app store to download and install the app.
- Turn on your phone's wireless network (Wi-Fi) and make sure your phone and device are on the same LAN.
- Open the APP, register your account and login, click [Add Device] to enter the device binding interface, it will automatically scan the NAS storage device, and then according to the APP guidance to set up product and use.  
(Tip: Please keep in mind the username and e-mail address of the registered account, it is recommended to record and save in case of forgetting, the subsequent inability to log in due to password forgetting must be retrieved through the username and e-mail address.)



"T-SmartHome"App

### PC Client

Please finish setup on your phone first, then go to <http://www.totolink.net> and download "T-Home" Windows version. Install and use it.

\*Please input full address include "http://"

07

## 5. Bind and Reset

### Device binding operation

- Administrator first binding  
-- Device binding operation can only be executed through the phone client. Binding method: Scan and discover the device in the same LAN and execute the configuration of the device.  
-- After the first user binds the device and sets the admin password, the user becomes the administrator of the device
- Normal users join  
-- Normal users need to join the device by scanning the invitation QR code shared by the admin app or by scanning and discovering the device within the same LAN and then contacting the admin to approve the usage permission.

### Delete Device User

When a user no longer uses the TOTOLINK Storage Server, the administrator can log into the device management and delete the user and all of the user's data, and the user will no longer be able to use the device.

### Device Reset Instructions

If users need to reset the device, they can press and hold the RST key for 5 seconds until all indicator lights flash and the system reboots. This operation will reset the device parameters and administrator password, but it will not affect the user's data stored to the hard disk, please operate with caution.

### Notes:

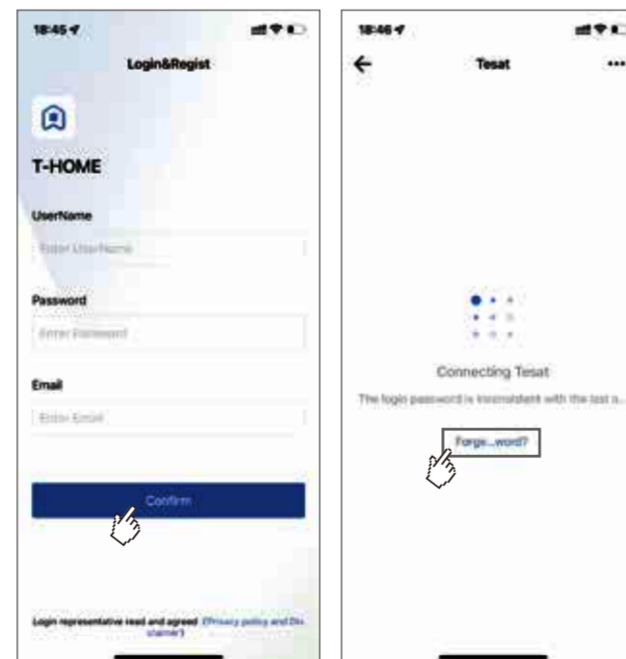
- The first installation of the hard disk will be formatted, please backup the hard disk data in advance.
- Hot-swapping the hard disk with electricity is forbidden to avoid data loss or hard disk damage.
- Data erased by deleting users or formatting the hard disk will not be recovered, so be sure to proceed with caution.

08

## 6. FAQs

### ① What should I do if I forget my login password?

On the login and registration page, enter the username that you need to retrieve your password, and enter any password that meets the filling specifications (for example: Totolink123), as well as the registered email address for verification. When there is a connection failure, select Forgot password and retrieve it through that email address.



09

### ② If I forget the NAS's administrator password, how to reset to the factory settings?

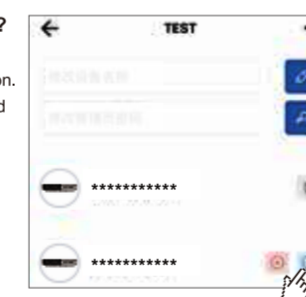
Keep the NAS powered on, then press and hold the RST button for 5-8 seconds until all indicator becomes blinking quickly. The NAS will restart automatically, the device parameters and administrator password reset to the factory settings.

### ③ Common reasons for unable to bind?

- NAS storage device LAN port is not properly connected to the Internet, you can try to change the router network port.
- The phone and the NAS storage device are not under the same LAN, and the device cannot be searched.
- No hard drive is inserted, or the hard drive is not inserted properly.
- The user adds the device and the administrator is not authorized.

### ④ How do administrators authorize?

Login to the app, My Devices > Device Management, and click Allow Authorization. This page allows you to view all registered users of the current device.



### ⑤ What drives are supported?

Support SATA3.0 interface standard 2.5-inch SSD, 2.5/3.5-inch HDD mechanical hard drive.

### ⑥ How do I log in to the device interface through my browser?

- Login to the APP, Samba interface, and query the IP obtained by the device.
- PC or phone browser enter this IP address to enter the login page.
- Initial user name: admin, initial password: AirMemo

\* If the device is configured, the password is the administrator password.

10

## 7. FCC Statement

This equipment has been tested and found to comply with the limits for a Class B digital device, pursuant to part 15 of the FCC Rules. These limits are designed to provide reasonable protection against harmful interference in a residential installation. This equipment generates, uses and can radiate radio frequency energy and, if not installed and used in accordance with the instructions, may cause harmful interference to radio communications. However, there is no guarantee that interference will not occur in a particular installation. If this equipment does cause harmful interference to radio or television reception, which can be determined by turning the equipment off and on, the user is encouraged to try to correct the interference by one or more of the following measures:

- Reorient or relocate the receiving antenna.
  - Increase the separation between the equipment and receiver.
  - Connect the equipment into an outlet on a circuit different from that to which the receiver is connected.
  - Consult the dealer or an experienced radio/TV technician for help.
- This device complies with part 15 of the FCC Rules. Operation is subject to the following two conditions: (1) This device may not cause harmful interference, and (2) this device must accept any interference received, including interference that may cause undesired operation.

### Caution

Any changes or modifications not expressly approved by the party responsible for compliance could void the user's authority to operate the equipment.

### Radiation Exposure Statement

This equipment complies with FCC radiation exposure limits set forth for an uncontrolled environment.

This transmitter must not be co-located or operating in conjunction with any other antenna or transmitter.

This equipment should be installed and operated with minimum distance 20cm between the radiator & your body.

11