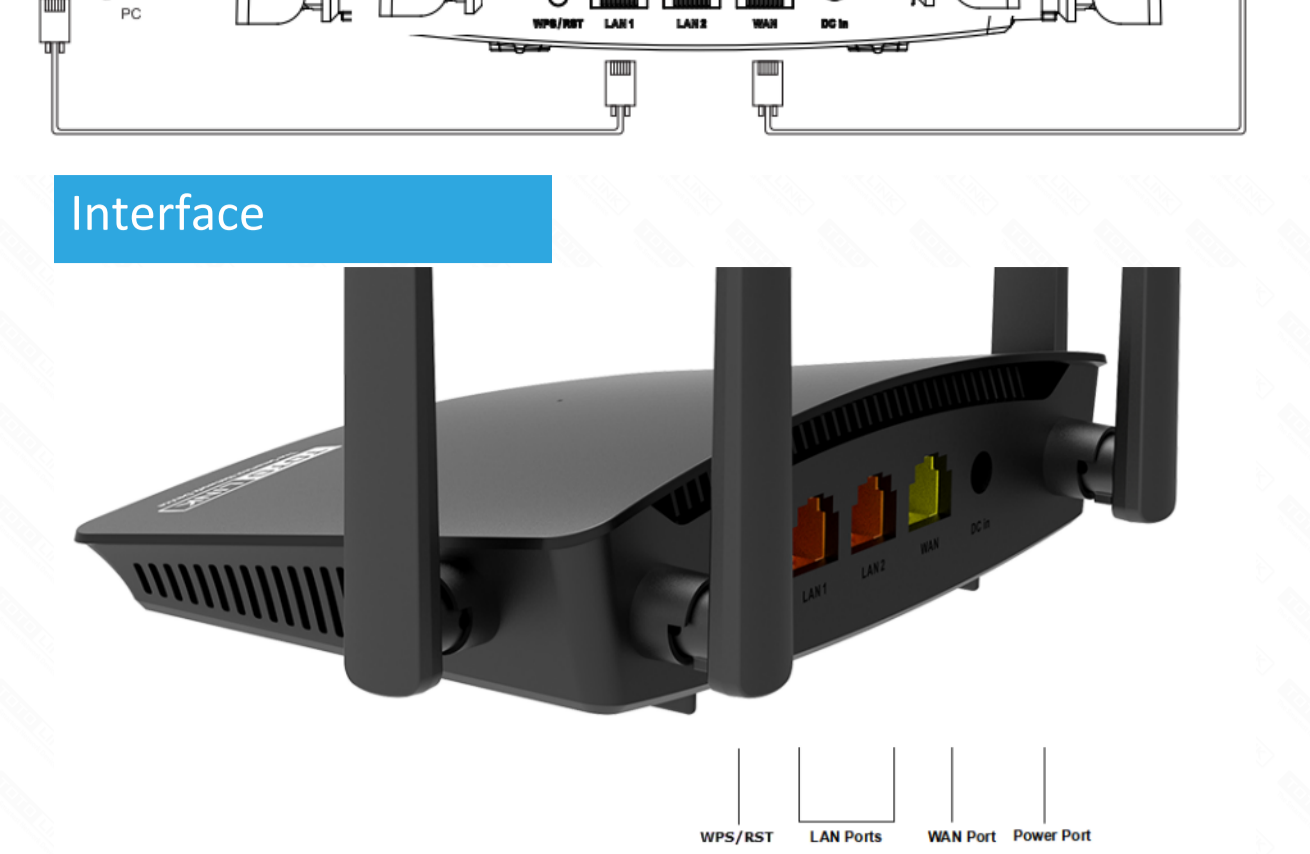


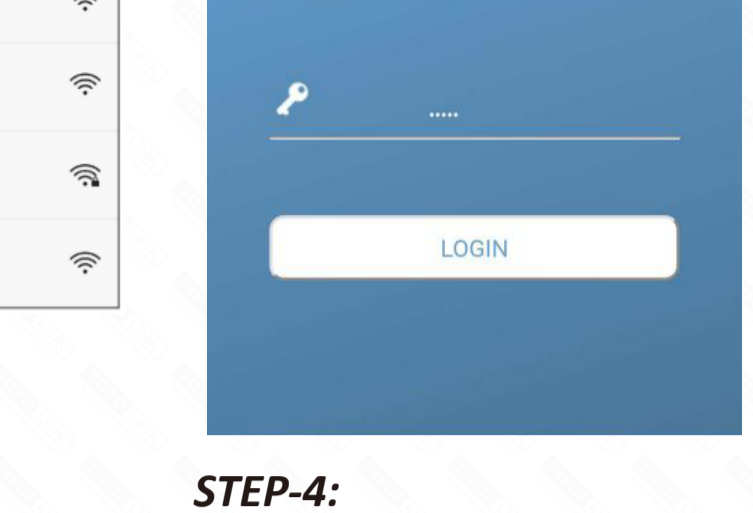
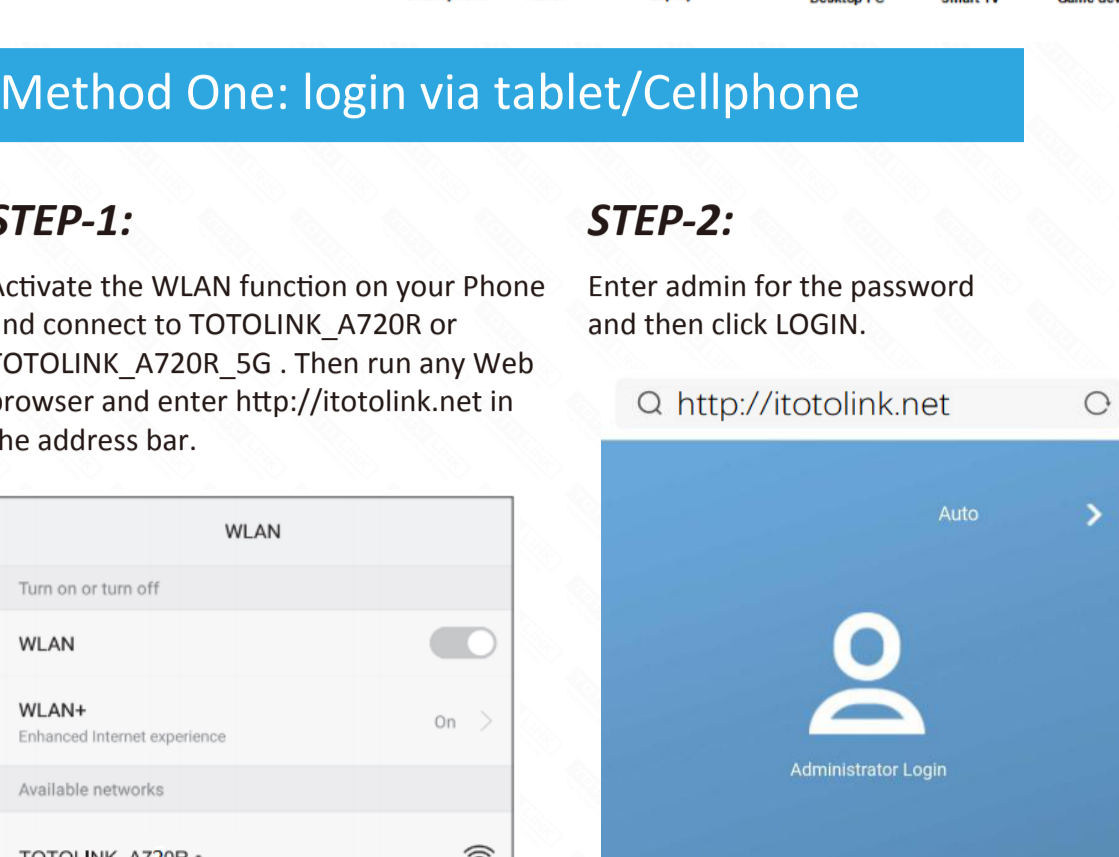
A720R Quick Installation Guide

It is suitable for : **A720R**

Installation Diagram



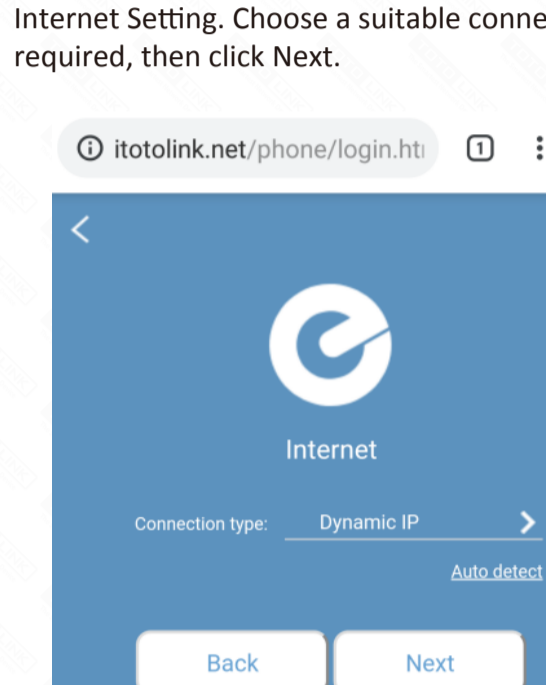
Interface



Method One: login via tablet/Cellphone

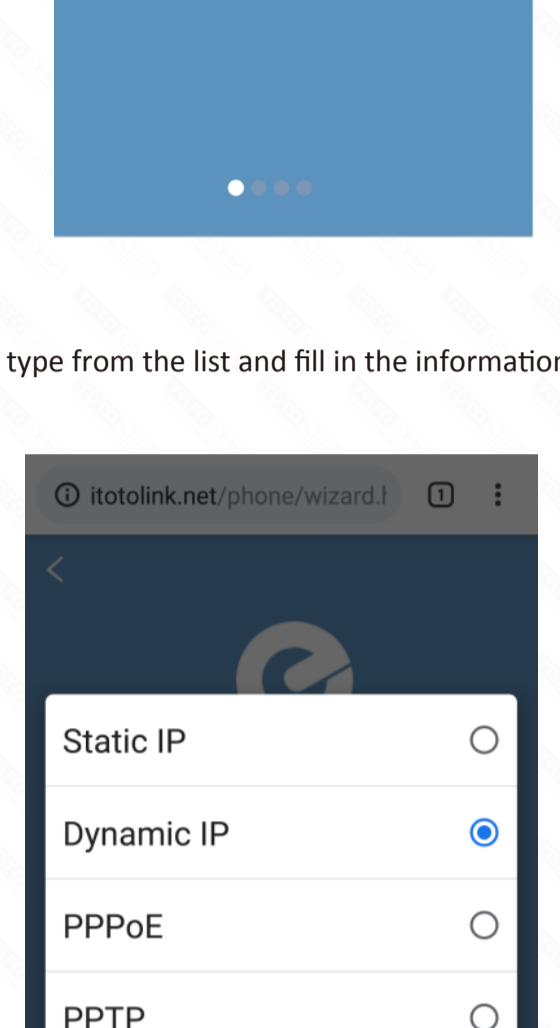
STEP-1:

Activate the WLAN function on your Phone and connect to TOTOLINK_A720R or TOTOLINK_A720R_5G . Then run any Web browser and enter http://itotolink.net in the address bar.



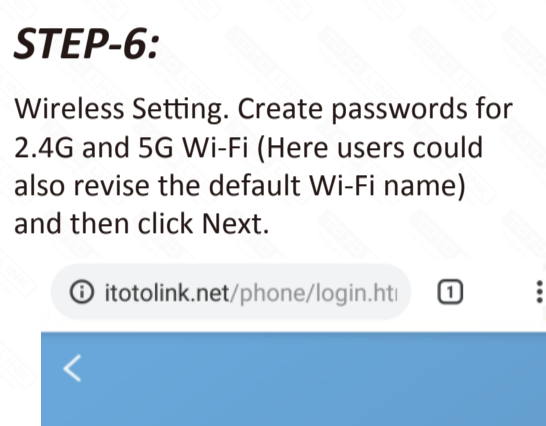
STEP-2:

Enter admin for the password and then click LOGIN.



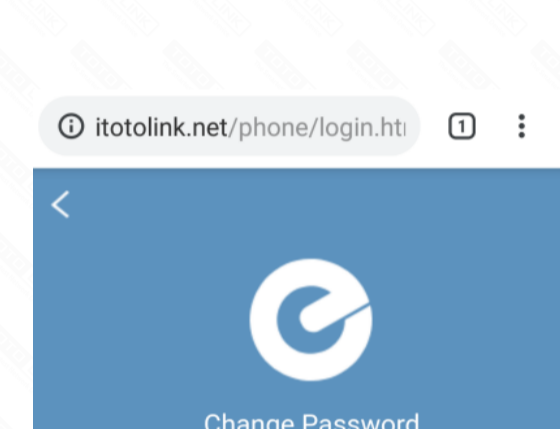
STEP-3:

Click Quick Setup.



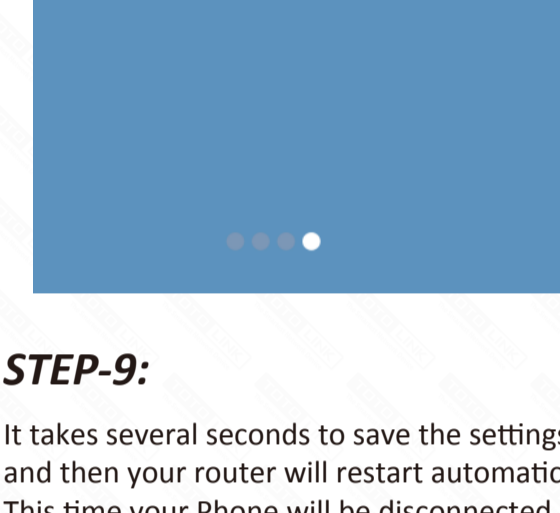
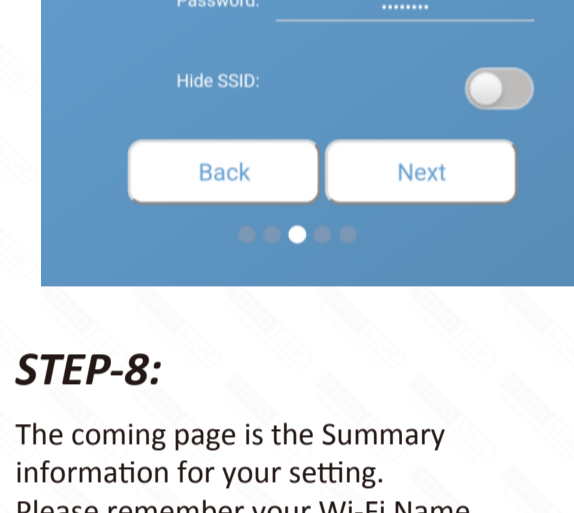
STEP-4:

Time Zone setting. According to your location, please click the Time Zone to choose a correct one from the list, then click Next.



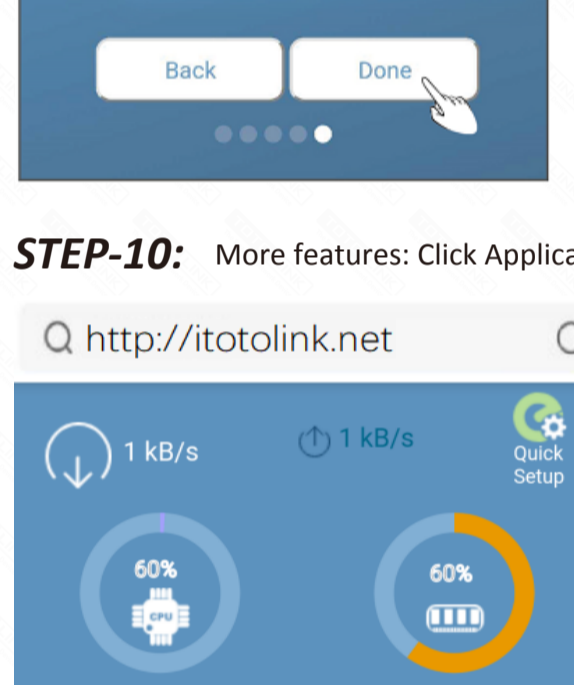
STEP-5:

Internet Setting. Choose a suitable connection type from the list and fill in the information required, then click Next.



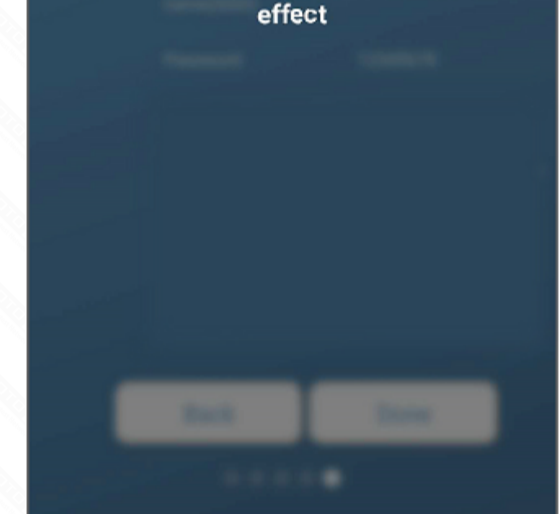
STEP-6:

Wireless Setting. Create passwords for 2.4G and 5G Wi-Fi (Here users could also revise the default Wi-Fi name) and then click Next.



STEP-7:

For security, please create a new Login Password for your router, then click Next.



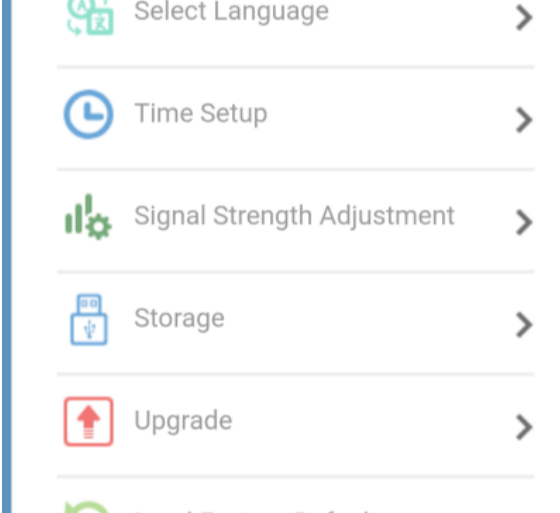
STEP-8:

The coming page is the Summary information for your setting. Please remember your Wi-Fi Name and Password, then click Done.



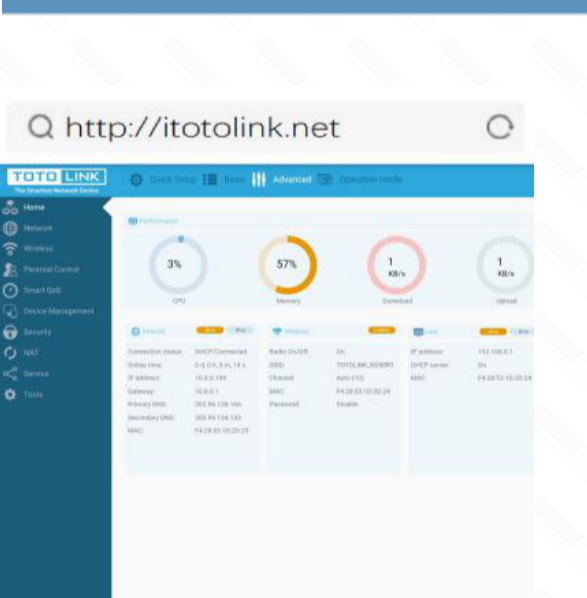
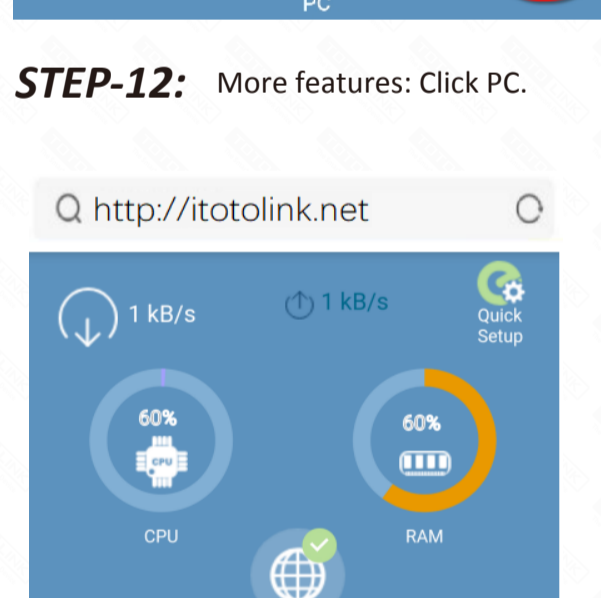
STEP-9:

It takes several seconds to save the settings and then your router will restart automatically. This time your Phone will be disconnected from the router. Please back to the WLAN list of your phone to choose the new Wi-Fi name and input the correct password. Now, you could enjoy the Wi-Fi.



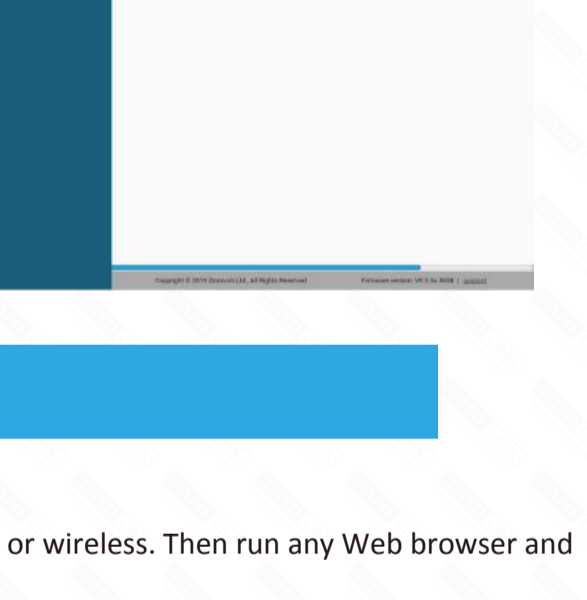
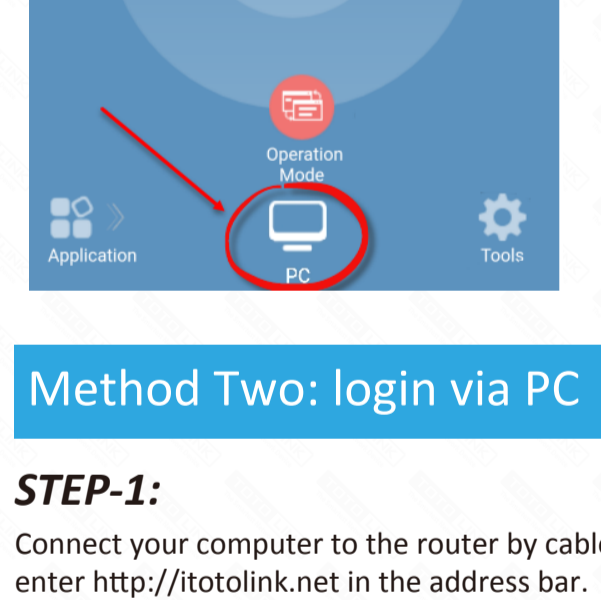
STEP-10:

More features: Click Application.



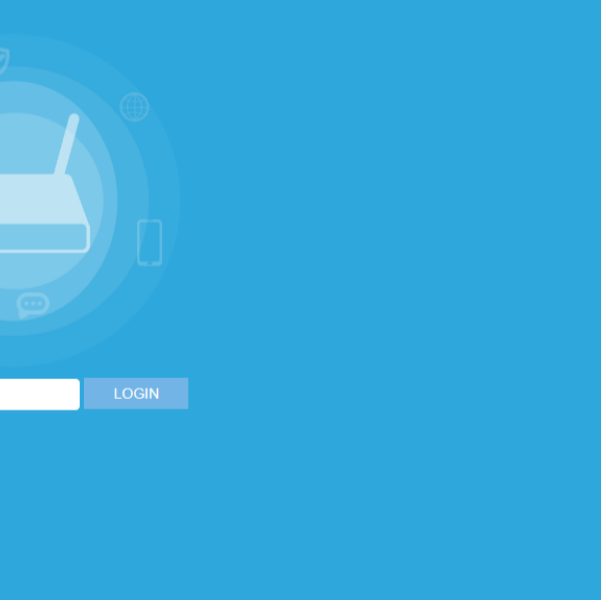
STEP-11:

More features: Click Tools.



STEP-12:

More features: Click PC.



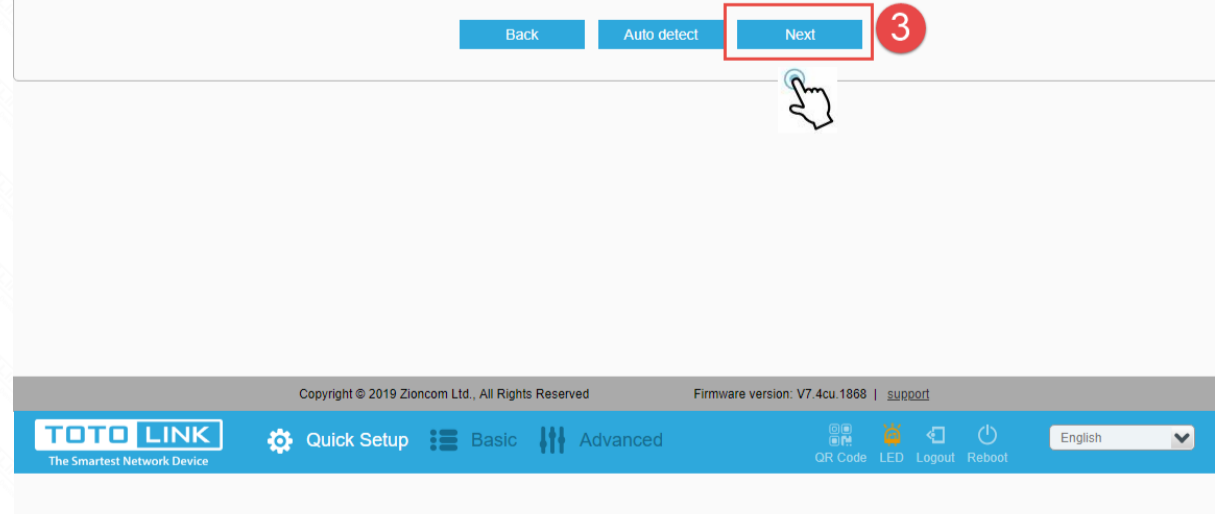
Method Two: login via PC

STEP-1:

Connect your computer to the router by cable or wireless. Then run any Web browser and enter http://itotolink.net in the address bar.

STEP-2:

Enter admin for the password and then click LOGIN.



STEP-3:

Click Quick Setup.

