

**TOTOLINK**  
The Smartest Network Device

## Quick Installation Guide

AC1300 Wireless Dual Band Gigabit Mesh Router

Model: T15

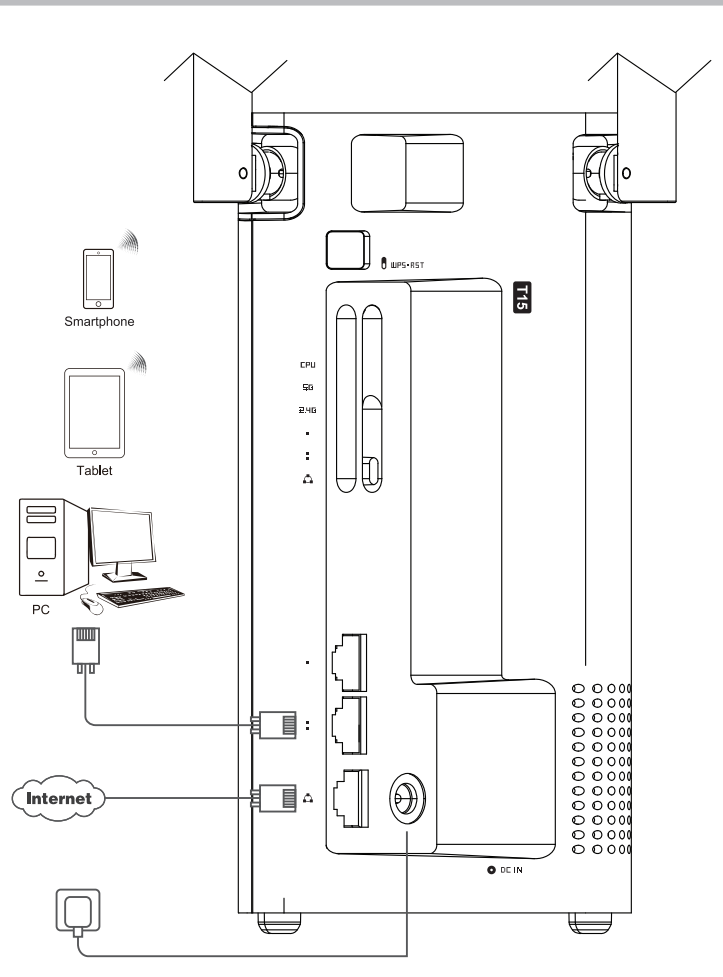
Copyright © TOTOLINK. All Rights Reserved.  
Website: <http://www.totolink.net>  
Information in this document is subject to change without prior notice.

# 1 Installation Diagram

Default Wi-Fi Name:  
2.4G: TOTOLINK, last 6 letters of MAC  
5G: TOTOLINK, last 6 letters of MAC\_5G

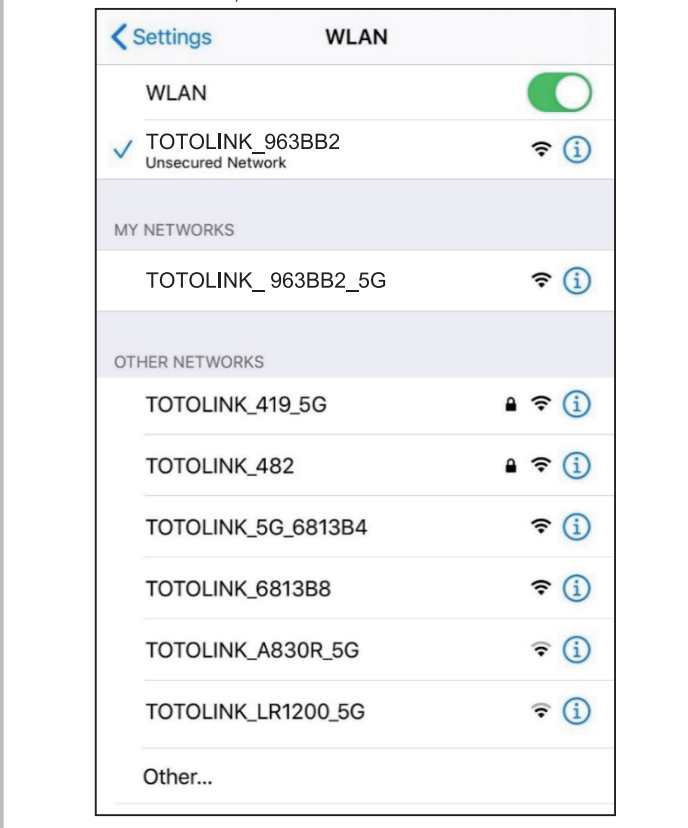
Indicators	Status	Description
CPU	On	The router is starting or the WPS function is enabled.
	Off	The router is not plugged in.
	Blink Slowly	The router is working normally.
WAN/ LAN1-2 indicators	Blink Quickly	The router is restoring to factory default settings.
	On	The port is connected successfully.
	Off	The port is disconnected.
2.4G/5G Wi-Fi indicators	Blink Quickly	The port is transmitting or receiving data.
	On	2.4G/5G Wi-Fi is working normally.
	Off	2.4G/5G Wi-Fi was turned off.
2.4G/5G Wi-Fi indicators	Blink Slowly	Master Router: 5G Wi-Fi indicator blink slowly, the Mesh function has been enabled or the connection has been completed.
	Blink Quickly	Satellite: 5G Wi-Fi indicator blink slowly, the Mesh connection has been completed.
	Blink Quickly	The WPS has been enabled or in the process of connecting a Mesh network.

Ports/Buttons	Description
DC IN	Connect to the power adapter.
WAN Port	Connect to the Internet.
LAN1/LAN2 Port	Connect computers or switches by using RJ45 cables. Press and hold the button for 5-8 seconds, until the CPU indicator blinks quickly, and the router will restore to factory default settings. Press the button for 1 second, then the CPU indicator will keep on and 2.4G/5G Wi-Fi indicators blink quickly, the WPS function is enabled.
RST/WPS Button	As a satellite, in the procedure of connecting a Mesh network, press the button for 1 second, then the CPU indicator will keep on and 2.4G/5G Wi-Fi indicators blink quickly, the Satellite starts to match the Master router.



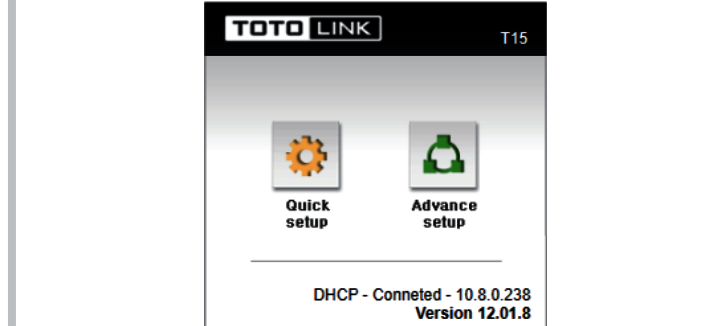
# 2 Configure the Router on Phone

1 Power the router on, connect to TOTOLINK\_963BB2 or TOTOLINK\_963BB2\_5G from the WLAN list on your phone.  
(Tip: Check the SSID on the sticker of router's body which form is TOTOLINK, last 6 letters of MAC.)

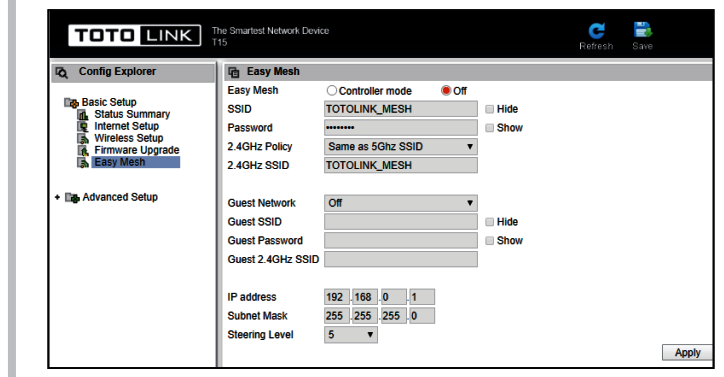


# 3 Configure the Easy Mesh

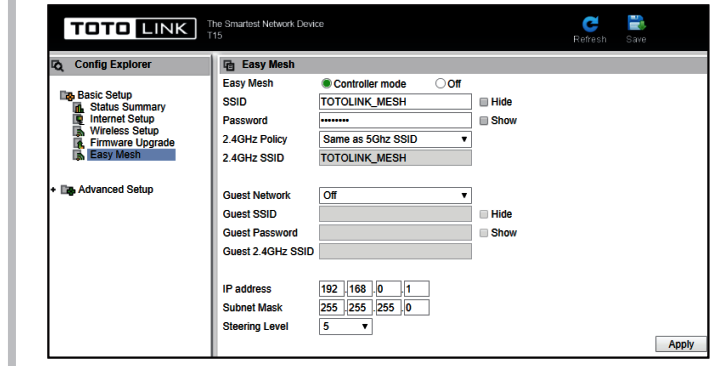
1 You need prepare 2 routers at least, one of them as the Master router and the other as satellite. Then power them on separately. Use the network cable to connect any LAN port of the Master router to your computer. Open any browser and enter 192.168.0.1 in the address bar to login the management page. Then click Advance setup in the coming page (You can also login this page with your phone).



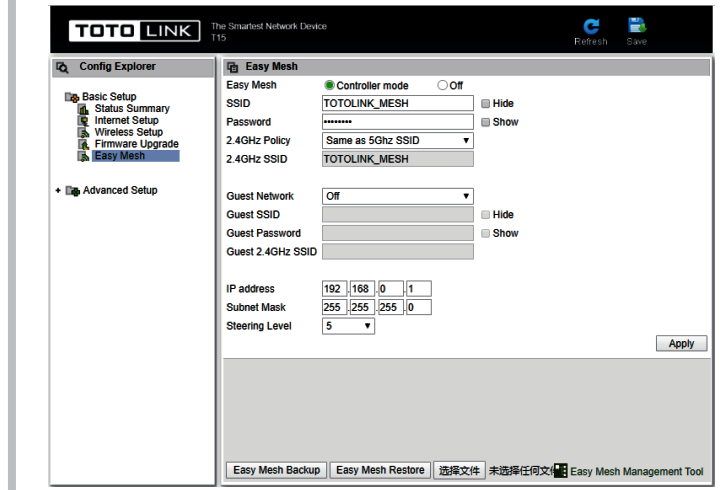
2 Please click Basic Setup — Easy Mesh to go to this setting page.



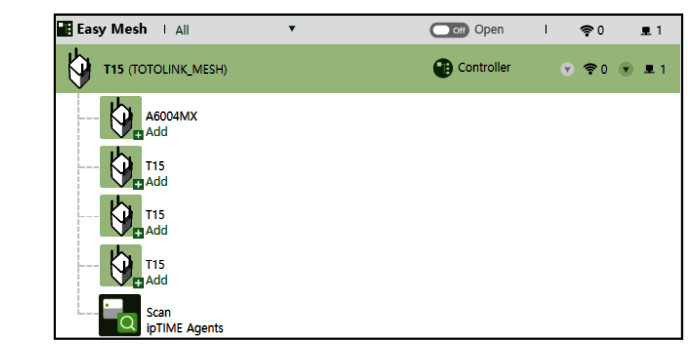
3 Firstly, select Controller Mode to enable Easy Mesh function. Second, set the SSID and Password of the Master router. Third, click APPLY. Then the router will restart after you click YES in the prompt box that appears. Please wait for the router to restart.



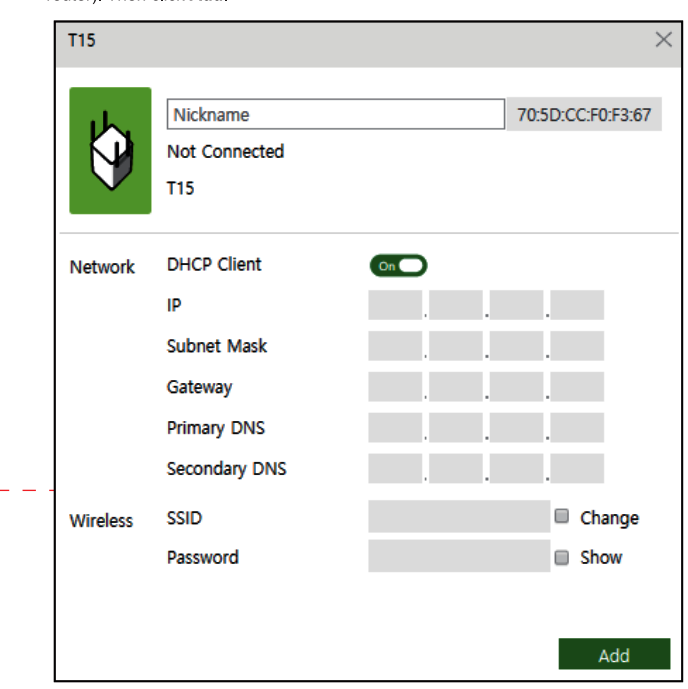
4 After restarting, please refresh the page, then click the button Easy Mesh that appears on the lower left corner of this page enter the manage page of Easy Mesh.



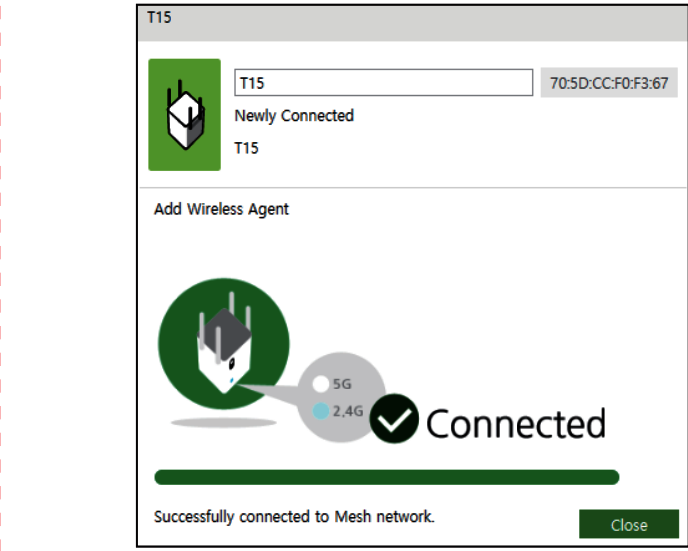
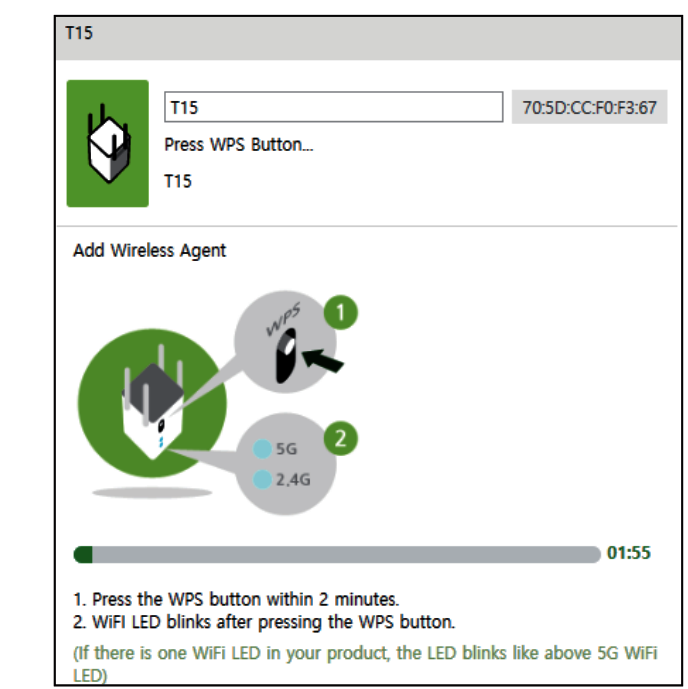
5 Firstly, click the Scan icon to find the satellite, then click the icon of satellite to add it to the Mesh network.



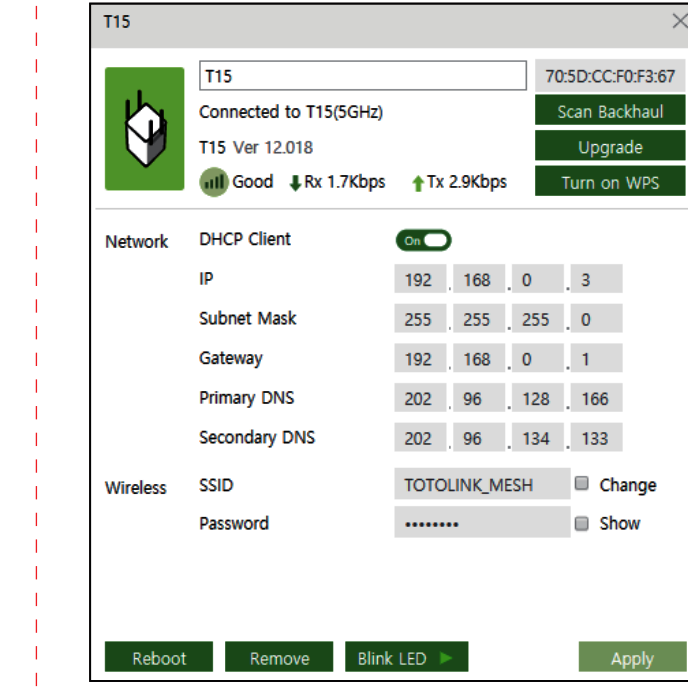
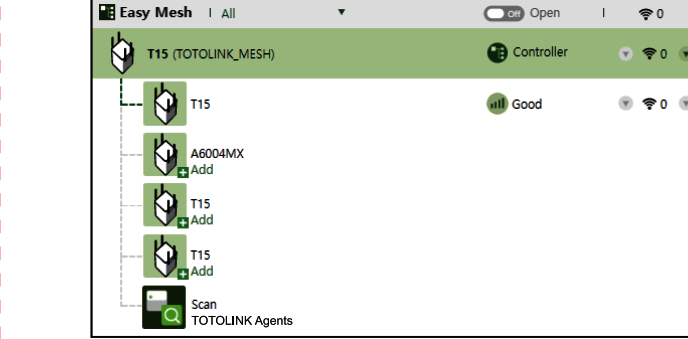
6 You can change the SSID of the satellite (the default name is the model number of the router). Then click Add.



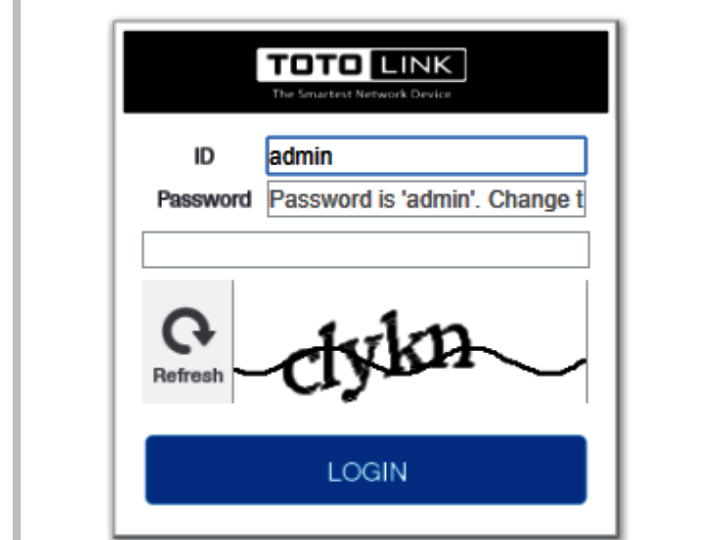
7 Please follow the instructions in the picture, press the WPS/RST button of satellite for 1 second within 2 minutes. Then the 2.4G and 5G indicators will blink quickly. The connection will completed after wait for some time.



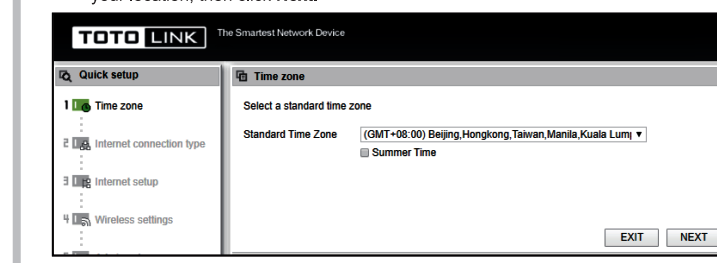
8 After connecting successfully, you can manage the satellite by click the icon directly.



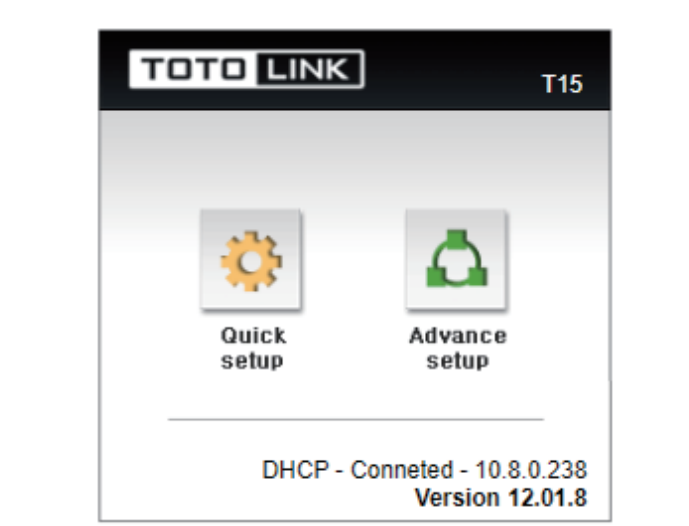
2 Open your phone browser and enter 192.168.0.1 in the address bar, then refresh the page. Input admin for password, then input the correct verification code on the login page, then click LOGIN.



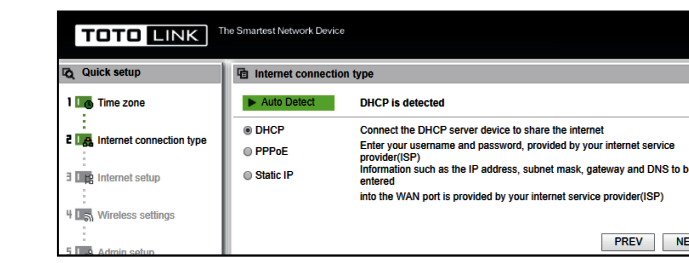
4 Setting the time zone. Select a suitable time zone from the option list according to your location, then click NEXT.



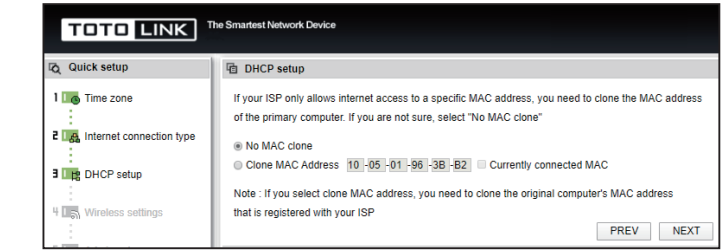
3 Click Quick setup in this page.



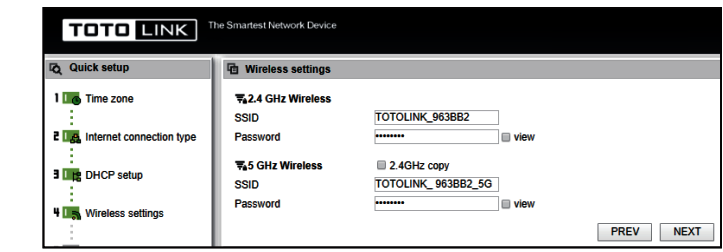
5 Setting the internet connection type. Please choose a suitable type among DHCP, PPPoE and Static IP. If you have no idea about which type to select, you can click Auto Detect and the system will choose the current most appropriate type for you automatically, then click NEXT.



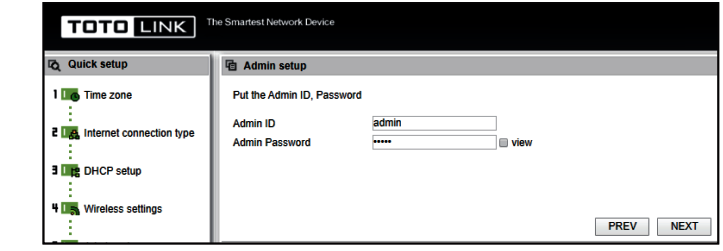
6 DHCP setup, if your ISP only allows internet access to a specific MAC address, you need to clone the MAC address of the primary computer. If you are not sure, select "No MAC clone".



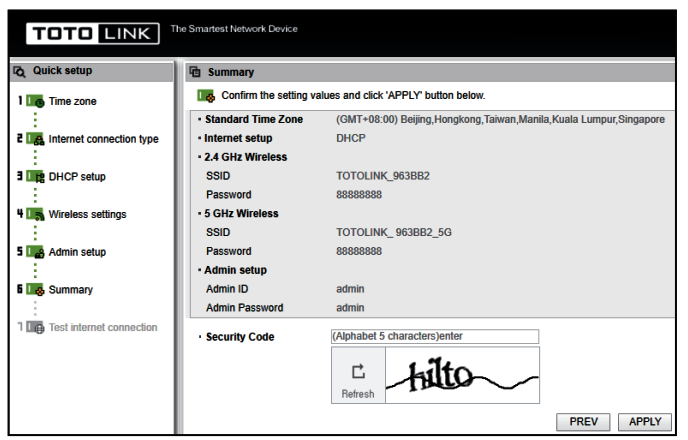
7 Setting the SSID (the name of Wi-Fi) and password of your Wi-Fi. Create a password for the 2.4G Wi-Fi and 5G Wi-Fi separately (you could also keep the default name), then click NEXT.



8 Admin setup. Please input a new Admin ID and Password (for the safety of your account, we suggest to change the default Admin ID and Password), then click NEXT.



9 Summary. Please remember the important information in this page, especially the SSID and Password of the Master router. (we recommend you take a screenshot to keep the information), then enter the correct verification code and click APPLY.



10 The router will save all the settings and restart, then your phone and PC will be disconnected from the original SSID. Please find the new SSID on the WLAN list of your phone or PC. After enter the correct password, you can enjoy the Wi-Fi.

# 3 FAQs

1. How to do if I unable to open the login page of the router on the browser?  
A. Check IP address of your computer, choose Obtain an IP Address Automatically (take Windows 10 as an example): Left-click Start — Setting — Network and Internet — Change Adapter Setting — Internet — right-click Properties — double click Internet Protocol Version 4 (TCP/IPv4) — Properties — choose Obtain an IP Address Automatically, Obtain DNS Server Address Automatically — click OK.  
B. Change another web browser and try it again.  
C. Check you have enter the correct IP address 192.168.0.1  
D. Restart the router and try it again.

2. How to do if we can not find available router in Easy Mesh Management Tool page.  
A. Click the Scan icon in this page to find available router.  
B. The Master router and satellite is too far away to be connected. You can put the satellite besides your Master router when you are setting Easy Mesh. After connecting successfully, you can put the satellite to a suitable place.

3. How to do if the connection has not appeared Connected after we wait for more than 2 minutes?  
A. We need to wait patiently since we connect the satellite for the first time. If it takes a long time still has not succeed, you can press and hold the WPS/RET button for 5-8 seconds to restore the router to factory default setting, then try it again.  
B. The Master router and satellite are too far away to be connected. You can place satellites besides your Master router when you are connecting them. After connecting successfully, you can put the satellite to a suitable place.

# FCC warning:

This equipment has been tested and found to comply with the limits for a Class B digital device, pursuant to Part 15 of the FCC Rules. These limits are designed to provide reasonable protection against harmful interference in a residential installation. This equipment generates, uses and can radiate radio frequency energy and, if not installed and used in accordance with the instructions, may cause harmful interference to radio communications. However, there is no guarantee that interference will not occur in a particular installation. If this equipment does cause harmful interference to radio or television reception, which can be determined by turning the equipment off and on, the user is encouraged to try to correct the interference by one or more of the following measures:

- Reorient or relocate the receiving antenna.
  - Increase the separation between the equipment and receiver.
  - Connect the equipment into an outlet on a circuit different from that to which the receiver is connected.
  - Consult the dealer or an experienced radio/TV technician for help.
- Operation is subject to the following two conditions:  
(1) This device may not cause harmful interference  
(2) This device must accept any interference received, including interference that may cause undesired operation.

**RF Radiation Exposure Statement**  
This equipment complies with FCC radiation exposure limits set forth for an uncontrolled environment. This transmitter must not be co-located or operating in conjunction with any other antenna or transmitter. This equipment should be installed and operated with minimum distance 20cm between the radiator and your body.

Manufacturer: ZIONCOM ELECTRONICS (SHENZHEN) LTD.  
Address: Room 702, Unit D, 4 Building Shenzhen Software Industry Base, Xuefu Road, Nanshan District, Shenzhen, Guangdong, China