

TOTO LINK
The Smartest Network Device

Quick Installation Guide

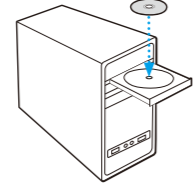
AX3000 Wireless Dual Band PCI-E Adapter

Model: X3000PE

Copyrights © TOTOLINK All rights reserved. Website: <http://www.totolink.net>
Information in this document is subject to change without prior notice.

2 Install Driver(Only for Win10 64bit System)

- 1** Insert the CD and run the **Autoinstall.exe**.



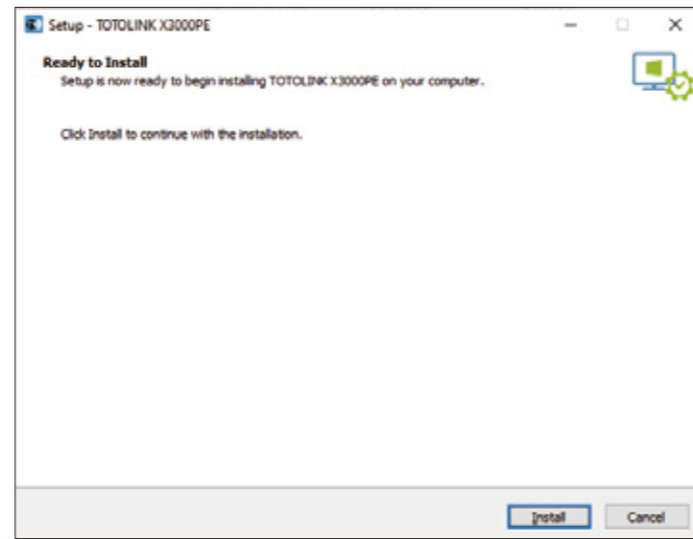
- 3** After the installation is completed, you need to restart the computer to take effect. Please choose to restart the computer now or restart later on.



- 2** Click "Install", The driver install will begin.

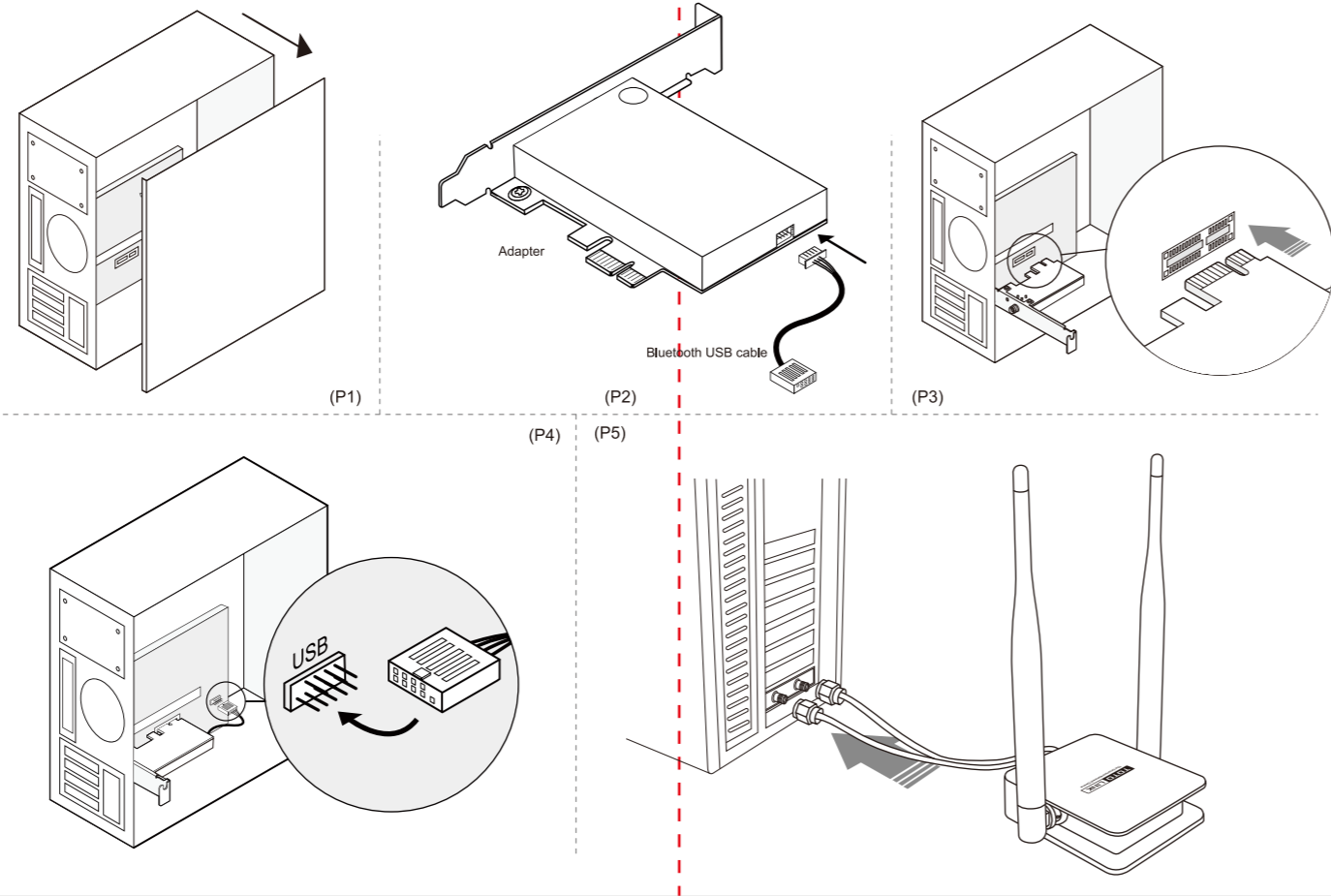


Note:
If you can't install the driver successfully, you should disable the antivirus software and firewall, then try it again. If your computer doesn't have optical driver, you can also get the latest driver by www.totolink.net



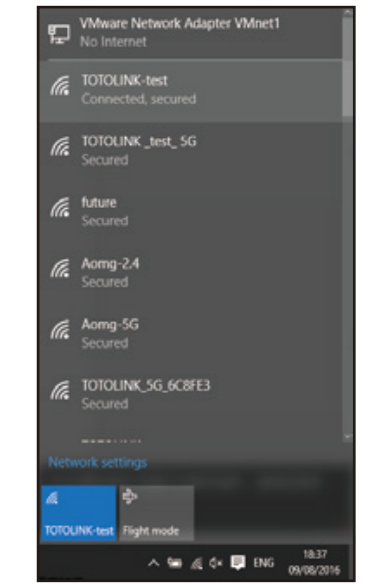
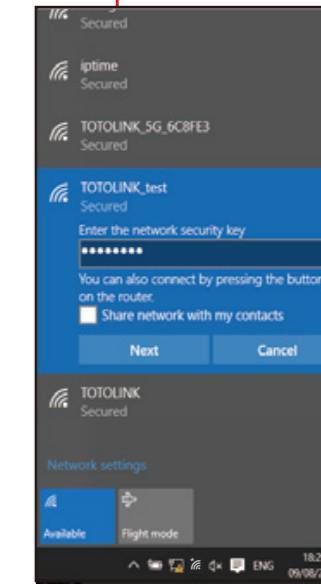
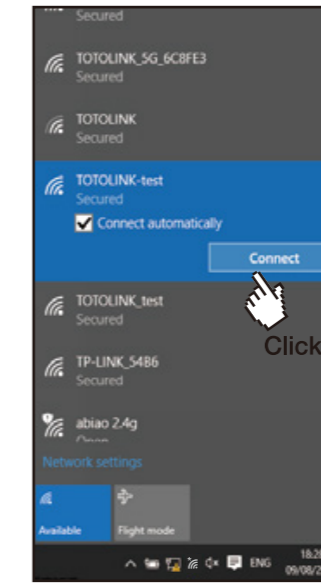
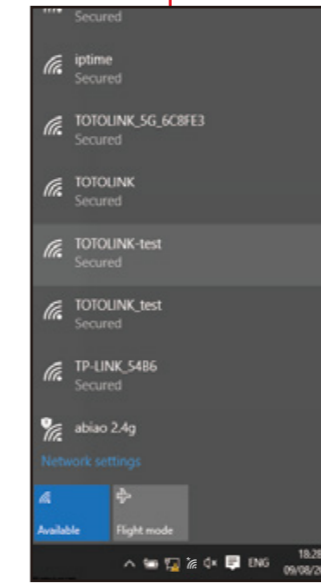
1 Connect to a Computer

- 1** Turn off your computer, unplug the power cable and remove the case panel.(P1)
- 2** Connect the provided Bluetooth USB cable to the adapter, Please note the shape of the ports(P2)
- 3** Find an available PCI-E X1 slot and carefully insert the X3000PE adapter.(P3)
Note:
1. Please install the wireless adapter onto the PCI Express x1 (short) slot, the PCI-E X16 (long) slot is not recommended. Please ensure it is seated completely.
2. If the bracket is not suitable for your PC, Please detach it from the board and replace it with the low-profile bracket.
- 4** Find an available F_USB connector and carefully plug the Bluetooth USB cable into it.(P4)
Note:
If the Bluetooth USB cable is not correctly connected to the motherboard, Bluetooth function won't work even after driver installation.
- 5** Connect the antenna to the adapter.(P5)
- 6** Cover the case panel, plug in the power cable and turn on your computer.



3 Connect to Wireless Router (For Windows 10)

- 1** Click the bottom on the lower right of your PC.
 Click
- 2** Search for 2.4GHz or 5GHz Wi-Fi SSID.(P2)
- 3** Choose your Router's SSID, click **Connect**.(P3)
- 4** Enter password of the Wi-Fi.(P4)
- 6** Wi-Fi connected successfully.(P5)



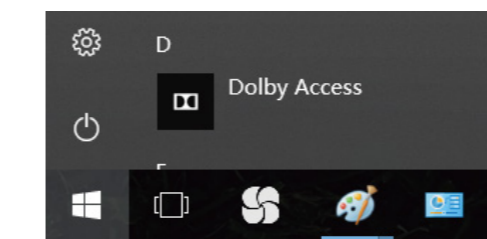
4 Connect to your BT Devices

- 1** X3000PE supports Bluetooth 5.0 and downward capability BT 4.2/4.0 standard. After installation, you can connect to Bluetooth devices by following the setups below (e.g. Bluetooth mouse, Bluetooth keyboard, Bluetooth speaker etc)
① Right-click the Bluetooth icon on the taskbar.
② Select Add a Bluetooth Device to scan for available devices.
③ Select your Bluetooth device from the list and follow the on-screen instructions to complete pairing.
Note: Make sure your device's Bluetooth is enabled and discoverable.
- 2** If it doesn't appear, Please refer to as below

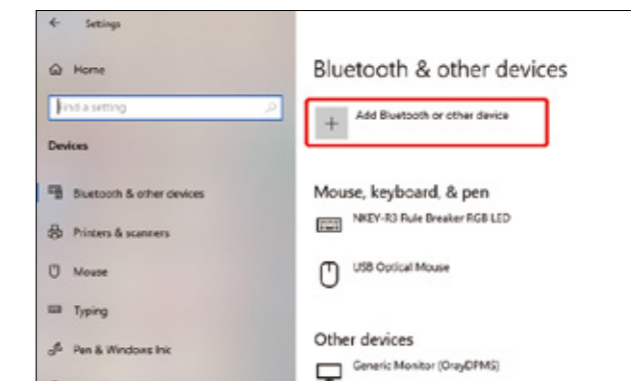
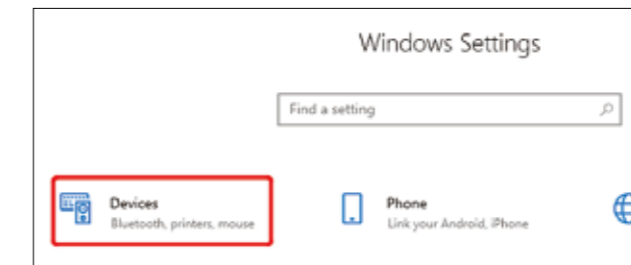
- ① Click the "Settings" icon (P1)

- ② Selete "Devices".(P2)

- ③ Scan and select the Bluetooth device you want to connect through "Add Bluetooth or other device".(P3)



(P1)



FCC warning:

This equipment has been tested and found to comply with the limits for a Class B digital device,pursuant to Part 15 of the FCC Rules. These limits are designed to provide reasonable protection against harmful interference in a residential installation. This equipment generates, uses and can radiate radio frequency energy and, if not installed and used in accordance with the instructions, may cause harmful interference to radio communications. However, there is no guarantee that interference will not occur in a particular installation. If this equipment does cause harmful interference to radio or television reception, which can be determined by turning the equipment off and on, the user is encouraged to try to correct the interference by one or more of the following measures:

- Reorient or relocate the receiving antenna.
- Increase the separation between the equipment and receiver.
- Connect the equipment into an outlet on a circuit different from that to which the receiver is connected.
- Consult the dealer or an experienced radio/TV technician for help.

Operation is subject to the following two conditions:

- (1) This device may not cause harmful interference
- (2) This device must accept any interference received, including interference that may cause undesired operation.

5 FAQs

- 1. How to place the antenna to get the best wireless signal?**
For the best Internet experience, keep the NIC antenna perpendicular to the horizontal plane.
- 2. After inserting the wireless network card to install the driver, the icon is displayed, the network cannot be connected, and the network is unavailable.**
Right-click the open icon, select "Open and Network Sharing Center", open "Change Adapter Settings" in the upper-left corner of the page, and confirm that the wireless network card adapter is on. If it is closed, select the corresponding network card and right-click "Enable".
- 3. What if the PCI-E network card device is not detected?**
 - ① Make sure that the adapter is firmly located in the appropriate PCI-E X1 slot, and that the current version of the X3000PE network card driver only supports Windows 10 (64-bit).
 - ② Make sure the current driver is the latest driver. The latest driver can be found on the product's Support page at <https://www.totolink.net>.
 - ③ Try restarting the computer or trying to use this network card on another computer.

RF Radiation Exposure Statement

This equipment complies with FCC radiation exposure limits set forth for an uncontrolled environment . This transmitter must not be co-located or operating in conjunction with any other antenna or transmitter. This equipment should be installed and operated with minimum distance 20cm between the radiator& your body.

Manufacturer: ZIONCOM ELECTRONICS (SHENZHEN) LTD.
Address: Room 702, Unit D, 4 Building Shenzhen Software Industry Base, Xuefu Road, Nanshan District, Shenzhen, Guangdong, China