

How to properly download installation driver of adapter

It is suitable for: **All TOTOLINK adapters**

Diagram



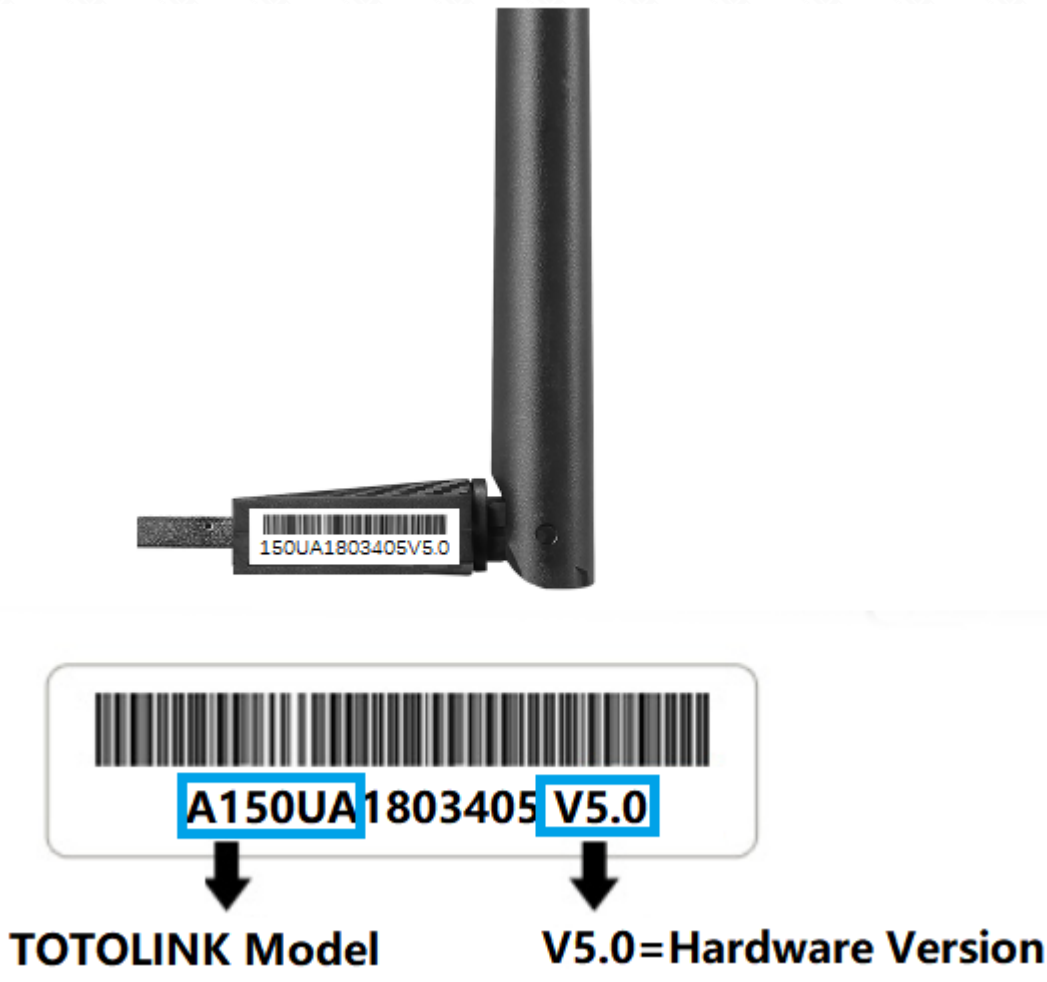
Preparation

- Before downloading files, please confirm the hardware version of your device and choose the corresponding driver version

Set up steps

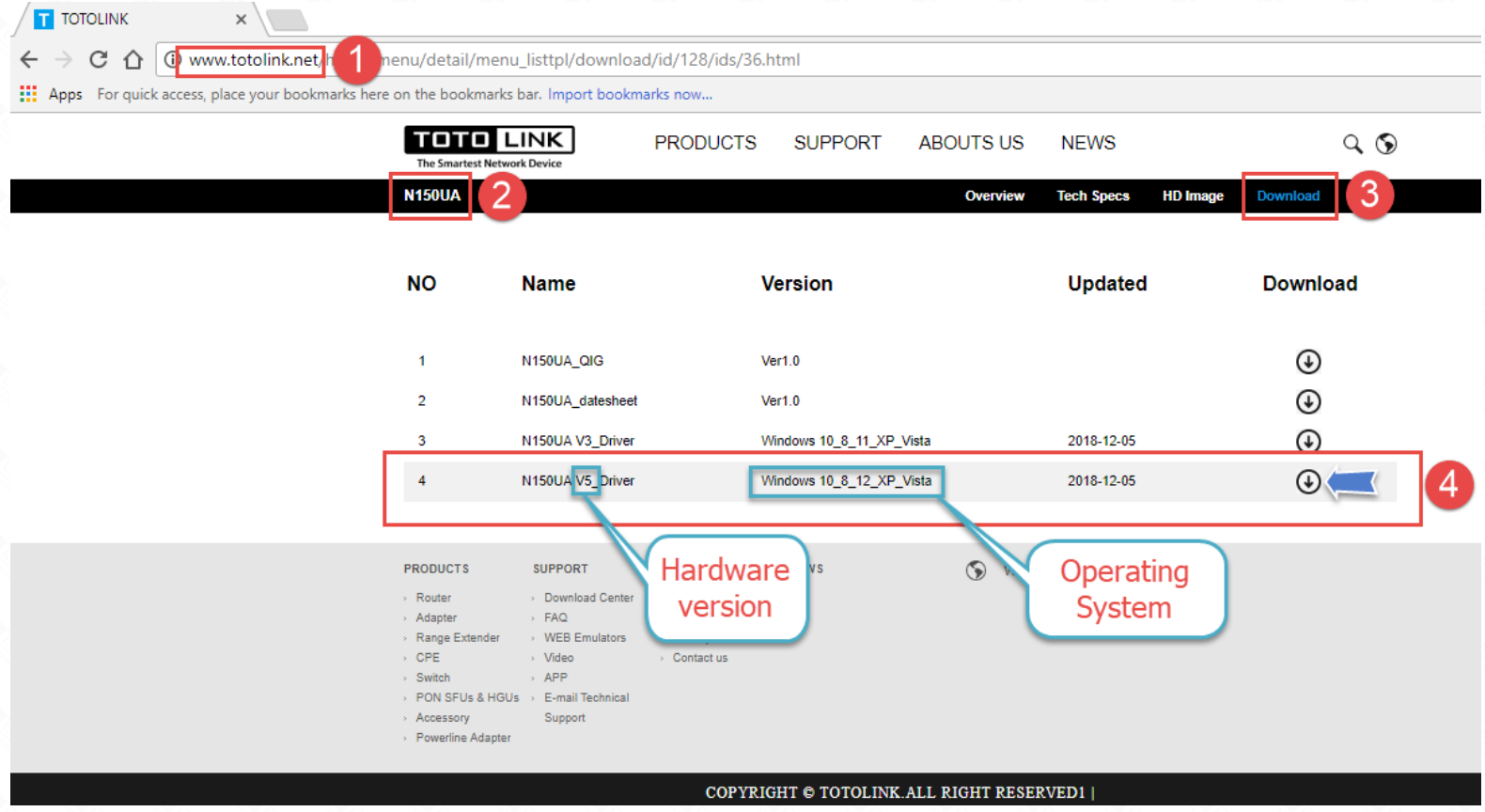
STEP-1: Guide for Hardware Version

For most TOTOLINK adapter, you can see a bar coded stickers at the front of the device, the character string started with Model No.(for example N150UA) and ended with Hardware Version (for example V5.0) is the serial number of your device. See below:



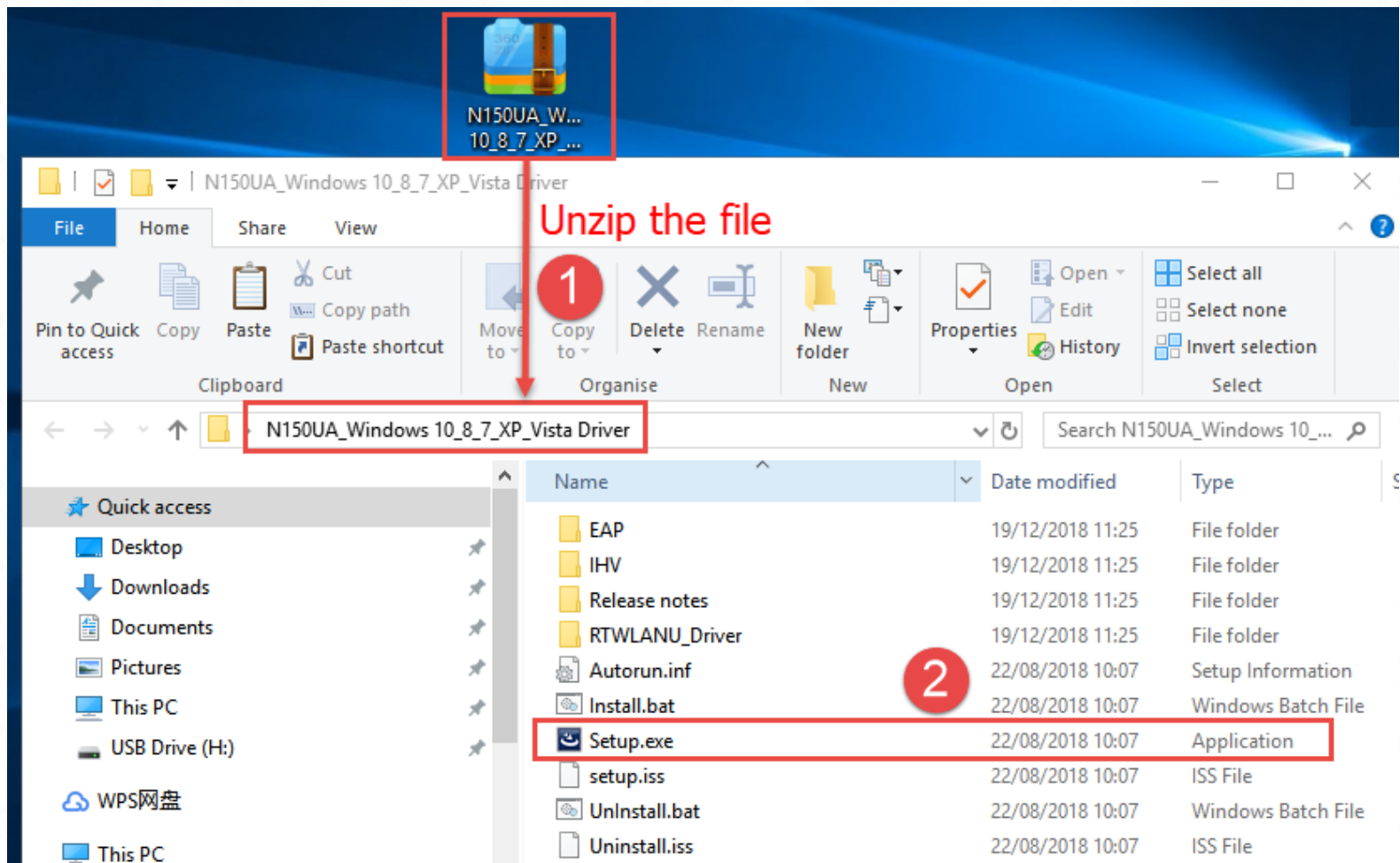
STEP-2:

Open browser, enter www.totolink.net Download the required files.
For example, if your hardware version is V5.0 , please download V5 version.
Note: If the hardware version is V1, V1 will be hidden.



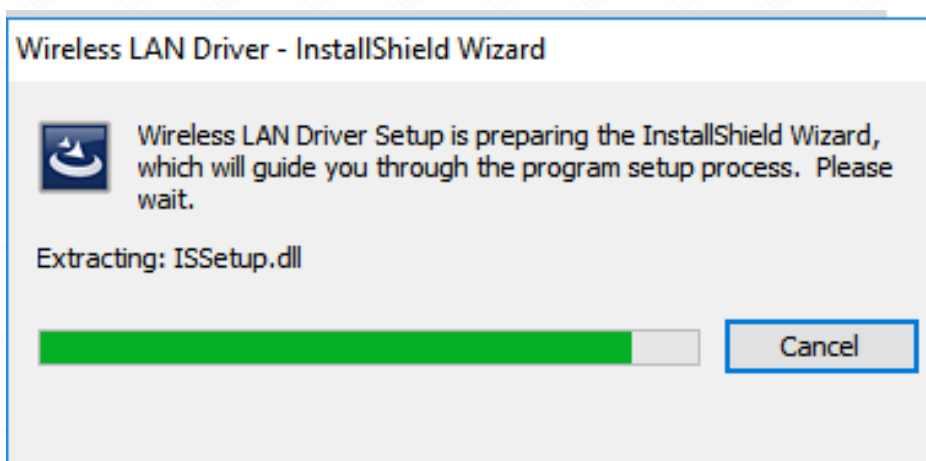
STEP-3:

Unzip the file, click to install the driver.



STEP-4:

Please waiting for a few seconds.



STEP-5:

Click "Finish", the driver program is installed successfully.

