

A3002RU IP filter settings

It is suitable for : **N100RE, N150RH, N150RT, N151RT, N200RE, N210RE, N300RT, N301RT , N300RH, N302R Plus, A702R, A850, A3002RU**

Application introduction: Solution about how to configure IP Address and Port Filtering on TOTOLINK.

STEP-1:

Connect your computer to the router by cable or wireless, then login the router by entering http://192.168.0.1 into the address bar of your browser.



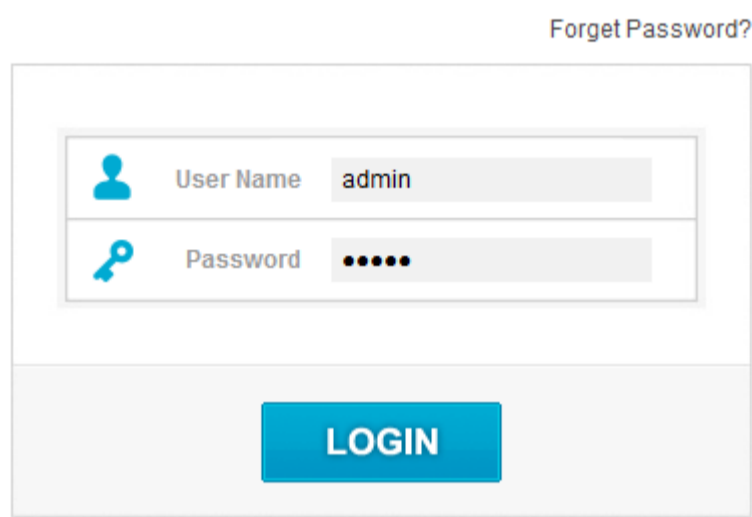
Note:

The default access address varies depending on the actual situation. Please find it on the bottom label of the product.

STEP-2:

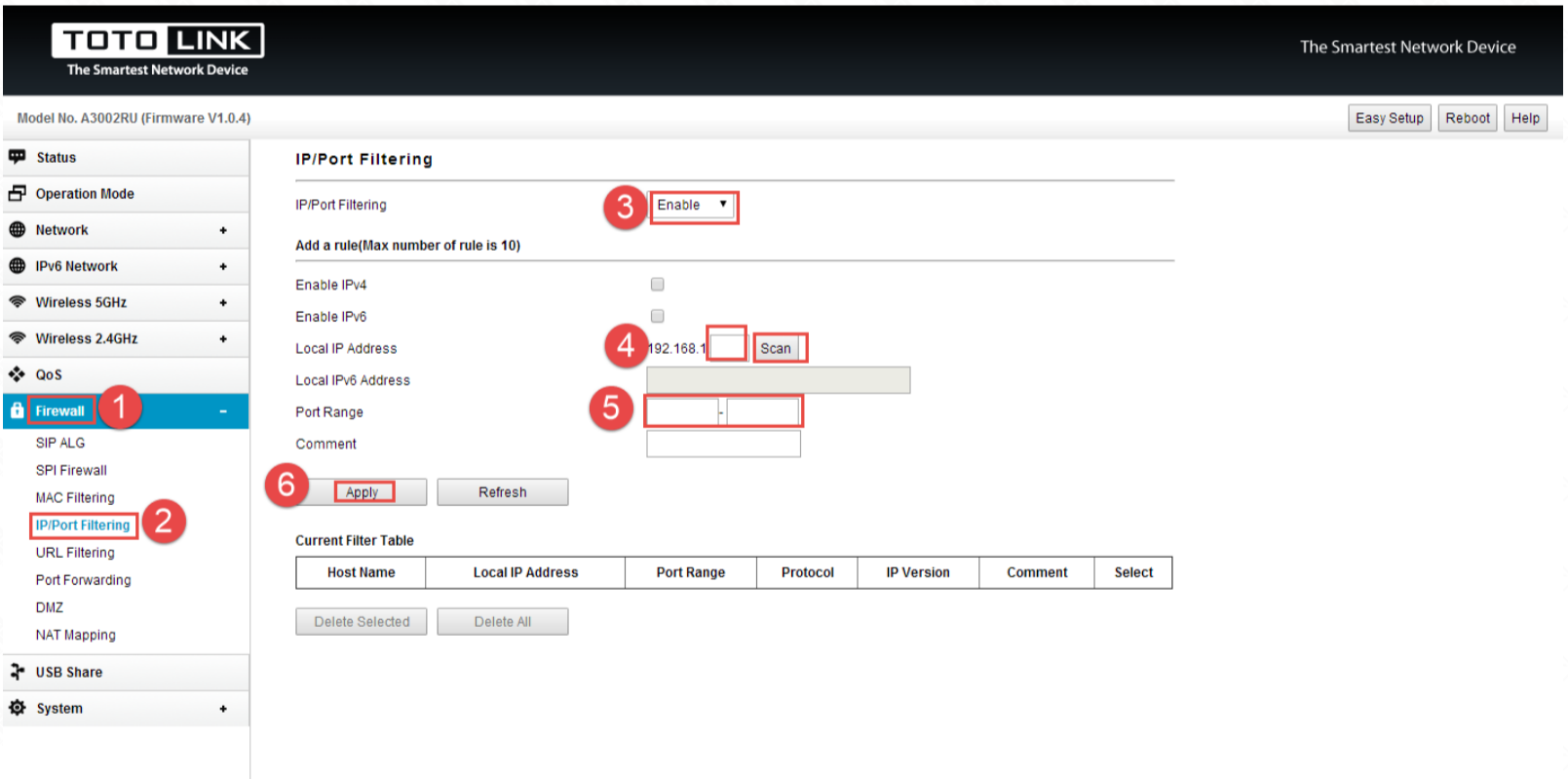
User Name and Password are required, by default both are **admin** in lowercase letter. Click **LOGIN**.

USER LOGIN



STEP-3: Modify in Easy Setup page

Please go to **Firewall ->IP/Port filtering** page, and check which you have selected. Select **Enable**, then Input **IP Address** and **Port Range** you want to restrain , then Click **Apply**.



STEP-4:

Please go to **Firewall ->IP/Port filtering** page, and check which you have selected. Select **Enable**, then Input **IP Address** and **Port Range** you want to restrain , then Click **Apply**.

