

# How to modify the user name and password?

It is suitable for: **N150RA, N300R Plus, N300RA, N300RB, N300RG, N301RA, N302R Plus, N303RB, N303RBU, N303RT Plus, N500RD, N500RDG, N505RDU, N600RD, A1004, A2004NS, A5004NS, A6004NS**

## Application:

If you want to modify the router's user name and password for logging in the web-configuration interface, please follow the steps below.

### STEP-1: Connect your computer to the router

1-1. Connect your computer to the router by cable or wireless, then login the router by entering <http://192.168.1.1> into the address bar of your browser.

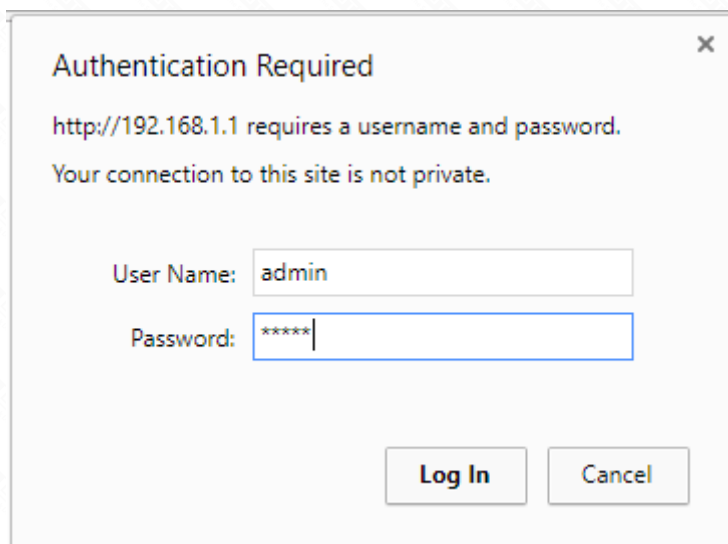


Note: The default IP address of TOTOLINK router is 192.168.1.1, the default Subnet Mask is 255.255.255.0. If you can't log in, Please restore factory settings.

1-2. Please click **Setup Tool** icon to enter the router's setting interface.



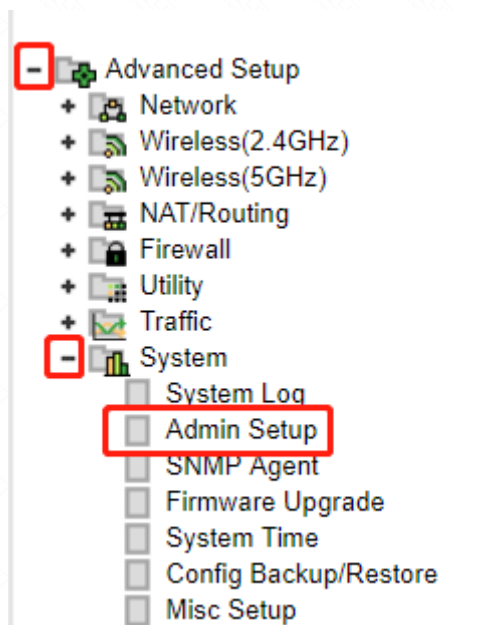
1-3. Please login to the Web Setup interface (the default user name and password is admin).



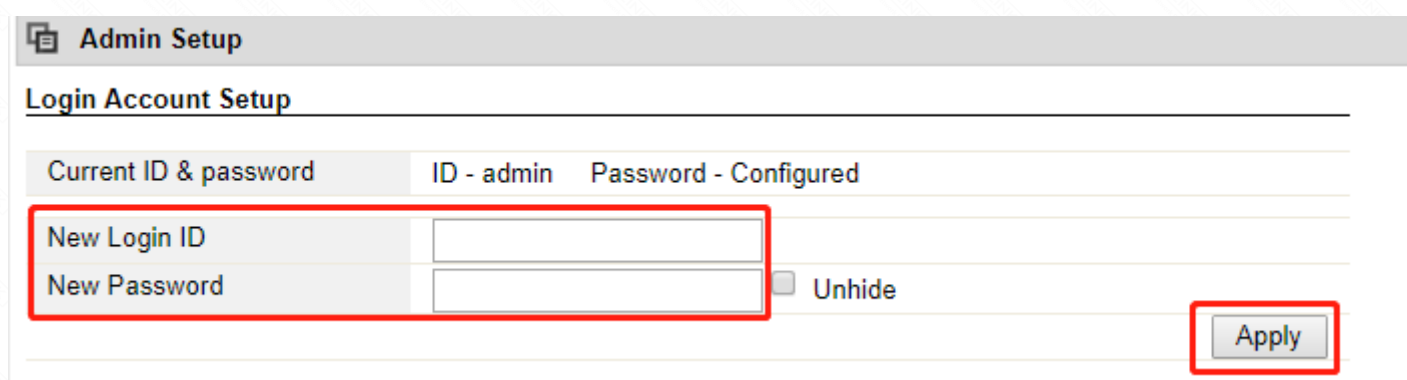
Now you can log in the router's interface to set up.

### STEP-2: Modify the user name and password

2-1. Choose **Advanced Setup->System->Admin Setup**



2-2. Input the new user name and password you want to change



2-3. Just click "Apply" to make the new user name and password to take effect.

Now you have changed the user name and password, please remember the user name and password for logging in the interface again.